



NEW PRODUCTS FOR

2018

“As simple as this ! Telescopic Smoke Pencil



Before Release



After Release

Releasing control: The telescopic extendable tube is convenient to adjust, just push the **release button**. It's quick and easy to control.

Product size (GRIP): Optimized for ergonomics, smoke pencil offers comfortable grip and reduces strain on the user.

Hose: The flexible hose will not get kinked or twisted during use.

Model:.....

Button Type:..... Push Button

Description: 2.5” Stainless Coated Blade, Holster

Cable Length:..... 10” Cable

Packaging Info.: 1pc/pack
10 pcs/box

ELECTROSURGICAL ACCESSORIES



JAU-3092-R - Non-sterile

Reusable - 50X PushButton Pencil with 3m cable only



JAU-1421

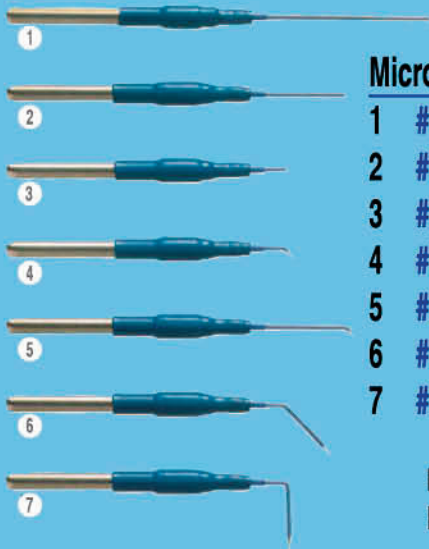
Disposable - Majestic Hand switching Rocker pencil with 1" Blade and holster - sterile -



JAU-1422

Disposable - Majestic Hand switching Button pencil with 1" Blade and holster - sterile -

OptiMicro[®] Needle Precision Electrodisection with Unparalleled Results



	Microdissection Needles	Package
1	#DN-0400 4cm long straight tip	10/box
2	#DN-0300 3cm long straight tip	10/box
3	#DN-0200 2cm long straight tip	10/box
4	#DN-0245 2cm long with 3mm long 45° tip	10/box
5	#DN-0345 3cm long with 3mm long 45° tip	10/box
6	#DN-0445 3cm long with 10mm long 45° tip	10/box
7	#DN-0390 3cm long with 10mm long 90° tip	10/box

Reduction Mammoplasty • Abdominoplasty • Reconstruction Mammoplasty
Blepharoplasty • Rhytidectomy • Head and Neck Dissection • Parotidectomy

EPISTOME® SCALPEL

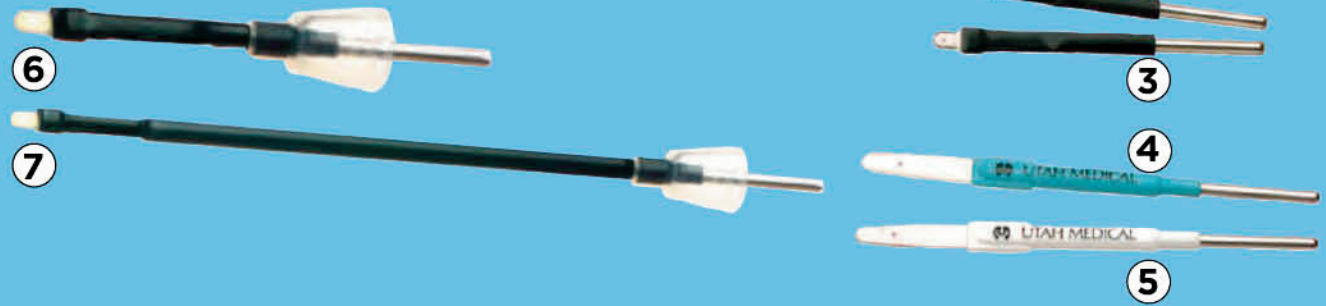
- Precise Dissection & Excision
- Reduced Thermal Injury
- Improved Wound Healing



Electrosurgical Scalpels

	Electrosurgical Scalpels	Package
1.	#CBE-250 .2mm Scalpel, Fine Wire, extended	4" shaft 25/box
2.	#CBE-150 .4mm Scalpel, Fine Wire, extended	4" shaft 25/box
3.	#CBE-210 .2mm Scalpel, Oto-Thoracic Bendable	2" shaft 25/box
4.	#CBE-100 .4mm Scalpel, Fine Wire, standard	2" shaft 25/box
5.	#CBE-200 .2mm Scalpel, Fine Wire, extended	2" shaft 25/box
6.	#CBE-220* .2mm Scalpel, Oto-Thoracic Bendable	2" shaft 10/box
7.	#CBE-270* .2mm Scalpel, Oto-Thoracic Bendable	6" shaft 10/box

*Shaft with ZapGuard



Autoclavable plastic ocular shields with premium quality polishing with 1mm-thick well-polished edges, black or transparent yellow



With suction cup

- 23-201 x-small, 23mm
- 23-202 small, 25mm
- 23-204 medium, 27mm
- 23-206 large, 28mm

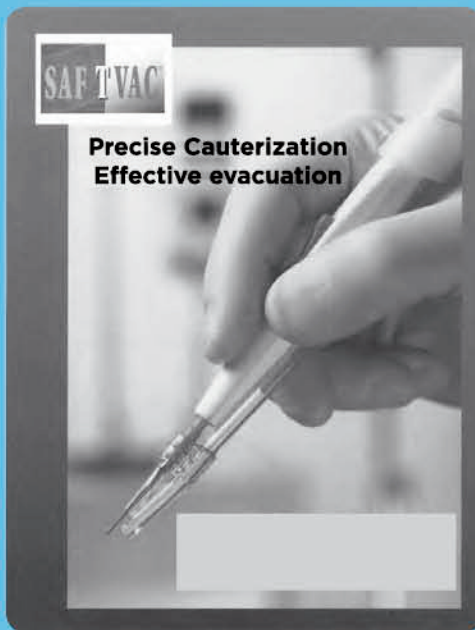
With handle -

- 23-201H x-small, 22mm
- 23-202H small, 24mm
- 23-204H medium, 26mm

- Yellow transparency allows seeing the pupil.
- Black blocks all light and vision.
- Suction cup or handle makes it easier to insert and remove, but handle remains there (handle not recommended for blepharoplasty).

SMOKE ASPIRATION TIPS

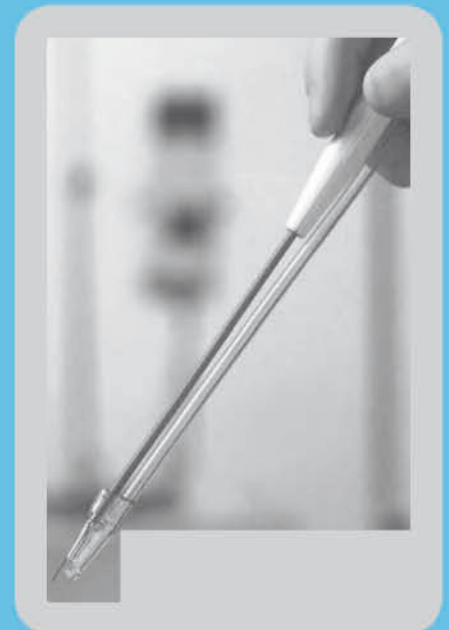
Now 2 choices available



New sleek and lightweight design provides a better visualisation and control without changing the surgeon's tactility.

A special dual action chamber system enhances your smoke evacuation.

#JAU-9797
10 per box



AARON 1250™ HIGH FREQUENCY ELECTROSURGICAL



GENERATOR

The Aaron 1250™, by Bovie®, features Cut (120 watts), Blend (90 watts), Coagulation (Coagulation 80 watts, Fulguration 40 watts), and Bipolar (30 watts) modes.

Bovie incorporates automatic safety features into the Aaron 1250™ like self-test circuits, audible tones, discreet outputs, isolated circuitry, and Bovie NEM™ (neutral electrode monitoring).

Also Available: the complete range of AARON BOVIE products



SURGIFRESH SMOKE EVACUATOR

Surgimedics offers its Surgifresh Turbo smoke evacuator. This unit features simple controls, powerful suction flow and quiet operation. It is a freestanding unit, that when equipped with the optional wheel cart and handle, is easily moved between procedure rooms. The Surgifresh Turbo is recommended for all electrosurgical and laser procedures in numerous medical specialties.

- Simple controls, powerful and quiet
- Cost-effective filtration system
- Replaceable prefilter
- Includes foot pedal for hands-free operation
- Recommended for all electro surgical and laser procedures

906500 Turbo Smoke Evacuator with foot switch

60 CC TOOMEY SYRINGES



#TS-60cc 20/box

Type: Sterile - Single use only

The Monoject 60 cc syringes with Toomey tip, are the syringes that are used for syringe aspiration. These are the syringes that your 60 cc syringe hub cannula were designed for. Packaged in individual sterile canisters.

STERILE SALINE TRANSFER SET



#JATS-90

** 60cc luerlock syringe sold separately



**ASPIRATION TUBING
#JAU-1160 / Latex Free**

High-flow tubing withstands the powerful demands of lipo-aspiration. JA-1160's proprietary glazed tubing reduces 'memory' and, combined with the 10' tubing length, provides maximum freedom of movement.

Packaged sterile in boxes of 10



**INFILTRATION-Y TUBING
#JAU-1161 / Latex Free**

This is the same large bore 'memory-free' plastic tubing in full 8' lengths with a Luer Lock fitting on the operating end and dual bag spikes with tubing clamps on the 'Y'. Designed to maximize flow without a break in surgery to change bags.

Packaged sterile in boxes of 10



**INFILTRATION TUBING
FOR PERISTALTIC PUMPS
#JAU-1168 / Latex Free**

Infiltration infusion pump tubing has a 9' operating length and a Luer Lock fitting. Peristaltic silicone tubing is pressure-locked to a 6' section of tubing with a bag spike. The silicone tubing section is designed for increased flow and easy insertion on the pump head.

Packaged sterile in boxes of 10

ALSO AVAILABLE:

#JAU-1159-MicroAire® style tapered liposuction tubing

#JAU-1163-Same as #JAU-1161 except 1 tube

#JAU-1170LY-Lysonix® style Bifurcated infusion tubing

COMPRESSION THERAPY

A Noninvasive Approach to DVT Prophylaxis



- #VP 500** Vaso Press Pump
- #VP 501P** Vaso Press Calf Garment, Pediatric for calf sizes up to 14"
- #VP 501M** Vaso Press Calf Garment, Medium for calf sizes up to 18"
- #VP 501L** Vaso Press Calf Garment, Large for calf sizes up to 24"
- #VP 501B** Vaso Press Calf Garment, Bariatric for calf sizes up to 32"
- #VP 520** Vaso Press Foot Garment, Fits Right or Left Foot
- #VP 530M** Vaso Press Thigh Garment, Medium for thigh sizes up to 29"
- #VP 530L** Vaso Press Thigh Garment, Large for thigh sizes up to 36"
- #VP 530B** Vaso Press Thigh Garment, Bariatric for thigh sizes up to 42"
- #VP 510** Vaso Press Tube Set, 60"
- #VP 510L** Vaso Press Tube Set, 120"

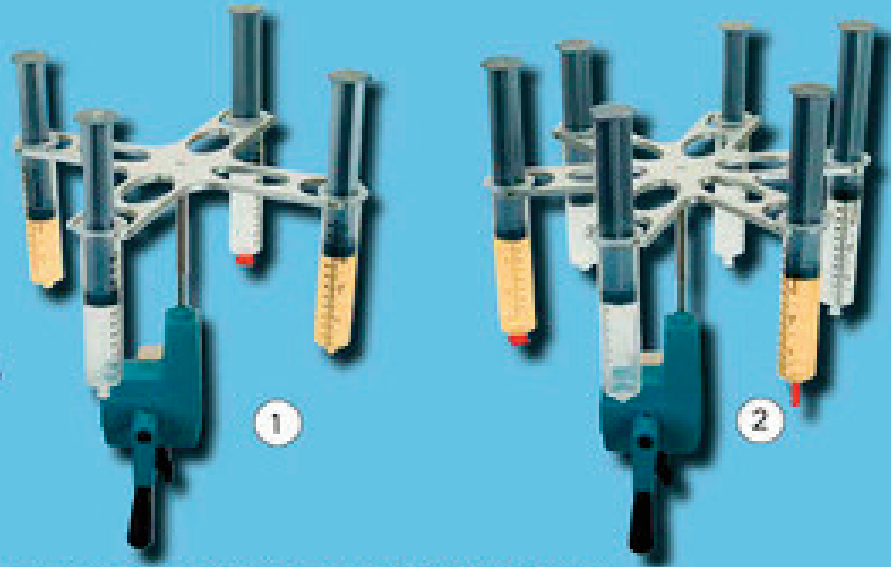
NOW AVAILABLE BLAKE® STYLE SILICONE DRAIN KITS



- #JAU-27413410113** 100cc Reservoir + 10 Fr fluted hubless drain + trocar
- #JAU-27413415113** 100cc Reservoir + 15 Fr fluted hubless drain + trocar
- #JAU-27413419113** 100cc Reservoir + 19 Fr fluted hubless drain + trocar

Blake is a registered trademark of Johnson & Johnson

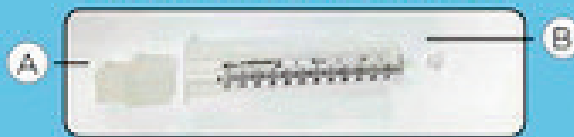
HAND CENTRIFUGES



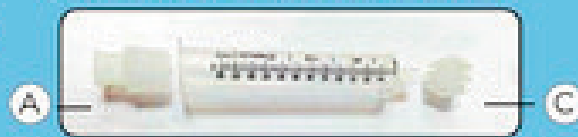
- 1 - Centrifuge base with extended post and new rotor 4 X 60cc Rings
- 2 - Centrifuge base with extended post and new rotor 6 X 60cc Rings
- * 10cc rings also available and sold separately

SYRINGE CAPS All Syringe caps are autoclavable reusable

60CC LUER LOCK SYRINGE



60CC LUER TOOMEY SYRINGE



Reusable Magnetic Pads 12" x 8"

Product No: #JAU-80855

Non-Sterile Product - Dimension: 12" x 8"



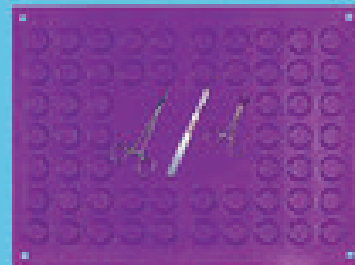
Autoclavable

Reusable Magnetic Pads 12" x 8"

w/transfer zone

Product No: #JAU-80856

Non-Sterile Product - Dimension: 12" x 8"



Reusable Magnetic Pads 12" x 16"

Product No: #JAU-80885

Non-Sterile Product - Dimension: 12" x 16"

Reusable Magnetic Pads 12" x 16"

w/transfer zone

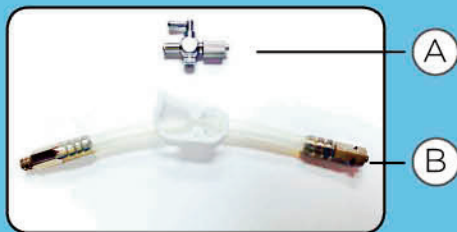
Product No: #JAU-80886

Non-Sterile Product - Dimension: 12" x 16"

DOMINANT 50

Silent, Powerful Performance

Canister system Includes:
 Canister, Lid, Stainless Rotating Luer Lock, Stand, Tubing with Adapter,
A. Stop Cock OPTIONAL
B. 6" Extention



- A.** On/off switch
- B.** Vacuum gauge in kPa and mmHg
- C.** Safety set
- D.** Membrane vacuum regulator
- E.** Standby indicator
- F.** Standard rail
- G.** Foot on/off switch
- H.** Castor with brakes

TISSUE TRANSFER

Completely Autoclavable & Reusable
5 Sizes available

250cc 500cc 1000cc 2000cc 3000cc



Completely Autoclavable & Reusable - Starting at

REUSABLE
Sterile Tissue Collection System
with Outer Drainage Valve

Re-Usable Gel Positioning Products



Non-Allergenic, Latex and Silicone Free
Over 200 Different Styles + Sizes Available

FOR ALL YOUR PLASTIC AND RECONSTRUCTIVE SURGICAL INSTRUMENTS

CHISELS & OSTEOTOMES



SCISSORS



FORCEPS



NEEDLE HOLDERS

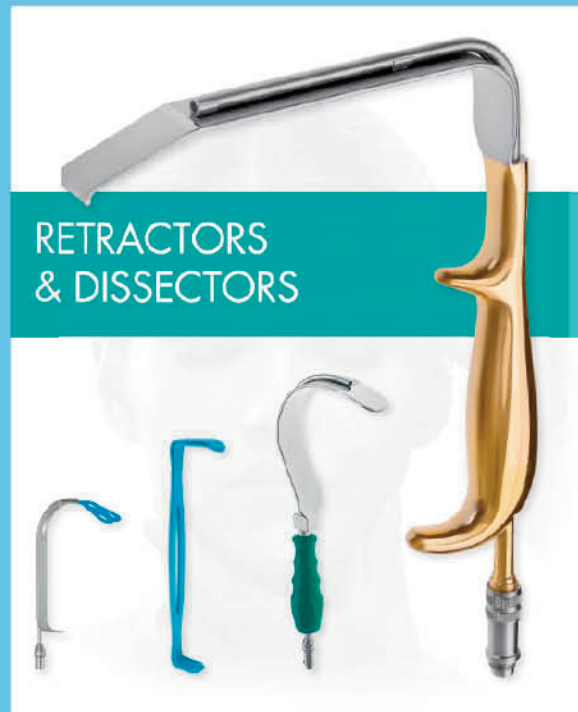


Also available

Rhinoplastic Set • Shapers • Endoscopic Instruments

https://www.dropbox.com/s/yjt6xbrz0em7kse/Aesthetics_06_2017.pdf?dl=0

FOR ALL YOUR PLASTIC AND RECONSTRUCTIVE SURGICAL INSTRUMENTS



Also available
Markers and Calipers • Suction Instruments

https://www.dropbox.com/s/yjt6xbrz0em7kse/Aesthetics_06_2017.pdf?dl=0

ALWAYS SAVING YOU 20% TO 50% ON YOUR SILICONE RESERVOIRS, DRAINS AND TUBING

Product	Description
#24200204	100cc Reservoir / sterile
#27621604103	4mm Flat Drain Full Perforation
#211079023	7mm Flat Drain Full Perforation
#216072032	7mm Flat Drain 3/4 Perforation
#211109023	10mm Flat Drain Full Perforation
#216109123	10mm Flat Drain 3/4 Perforation
#27411307003	100cc Reservoir with 7mm Flat Drain Full Perforation
#27411507003	100cc Reservoir with 7mm Flat Drain 3/4 Perforation
#27411110003	100cc Reservoir with 10mm Flat Drain Full Perforation
#27411610003	100cc Reservoir with 10mm Flat Drain 3/4 Perforation
#27621396073	7Fr Round Drain with End Perforation
#27621396103	10Fr Round Drain with End Perforation
#21396153	15Fr Round Drain with End Perforation
#21396193	19Fr Round Drain with End Perforation
#27412207013	100cc Reservoir with 7 Fr Drain Round End Perforation
#27412210013	100cc Reservoir with 10 Fr Drain Round End Perforation
#27412215003	100cc Reservoir with 15 Fr Drain Round End Perforation
#2741001904	100cc Reservoir with 19 Fr Drain Round End Perforation
#450121	Y Connector
#215189073	7mm white, fully fluted
#215179073	7mm white, 3/4 fluted
#215189103	10mm white, fully fluted
#215179103	10mm white, 3/4 fluted
#21439073	7mm white, fully fluted with trocar
#21449073	7mm white, 3/4 fluted with trocar
#21439105	10mm white, fully fluted with trocar
#21449105	10mm white, 3/4 fluted with trocar
#27621859103	10Fr white, full fluted
#214691031	10Fr white, full fluted with trocar
#2181049153	15Fr white, full fluted
#214691531	15Fr white, full fluted with trocar
#2181049193	19Fr white, full fluted
#214691931	19Fr white, full fluted with trocar
#27621546103	10Fr clear with ROP stripe, Hubless, fluted
#21489103	10Fr clear with ROP stripe, Hubless, fluted with troca
#27621526153	15Fr clear with ROP stripe, Hubless, fluted
#21469153	15Fr clear with ROP stripe, Hubless, fluted with troca
#27621526193	19Fr clear with ROP stripe, Hubless, fluted
#21469193	19Fr clear with ROP stripe, Hubless, fluted with troca
#27621526243	24Fr clear with ROP stripe, Hubless, fluted



****Drains also available with Trocar, please call for quote****

All products are 100% Latex Free - Other sizes of silicone tubing available upon request